



THE GRAND VIEW.

**IDEAL FAMILY
RESORT**

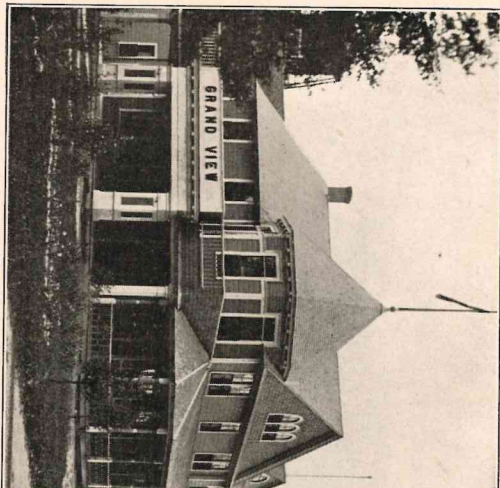
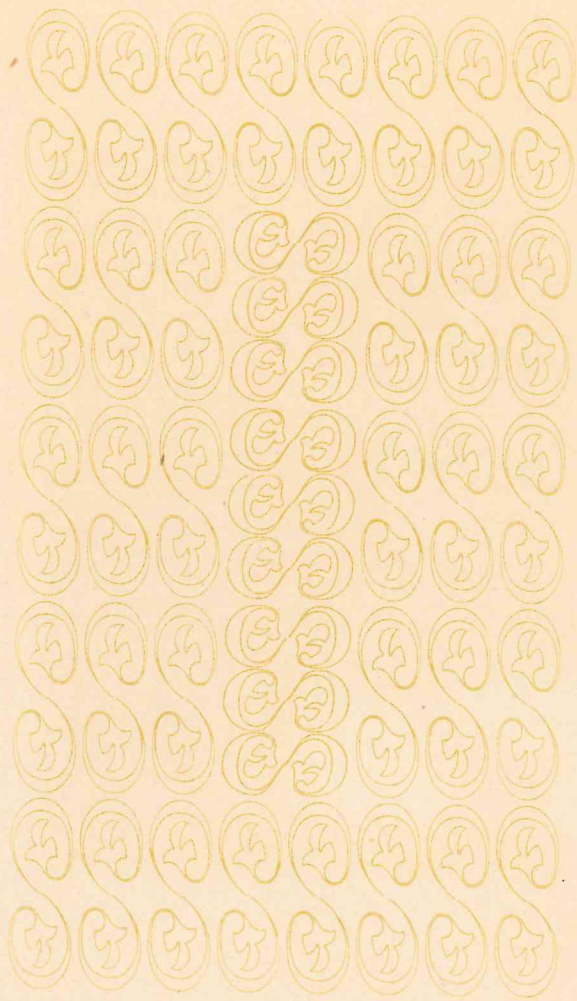
**THE
GRAND VIEW HOTEL
AND
GOTTAGES.
WAUPAGA, WIS.**

ON THE CHAIN O' LAKES

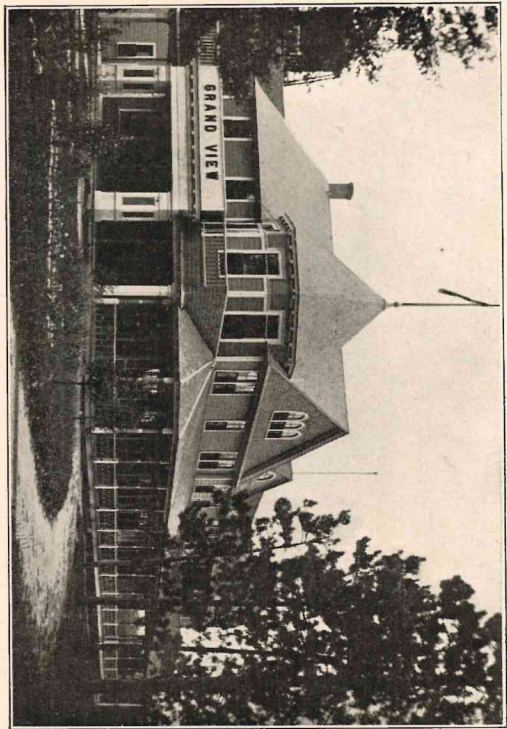
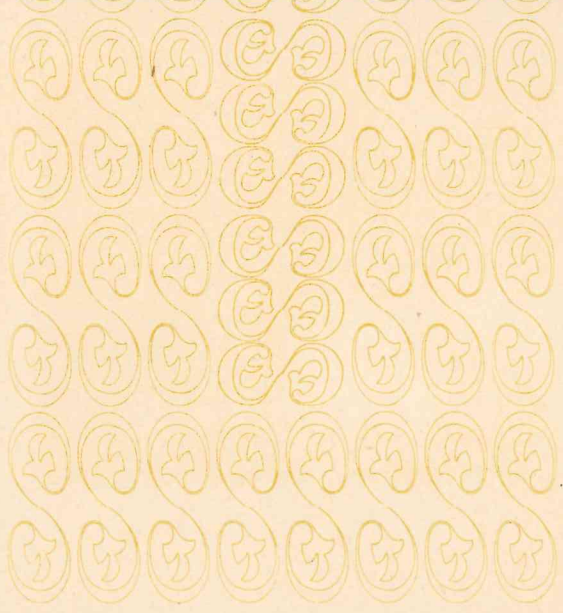


THE ANNEX.

GRAND VIEW HOTEL CO.
OWNERS AND PROPRIETORS
WALLACE H. LORD, MANAGER



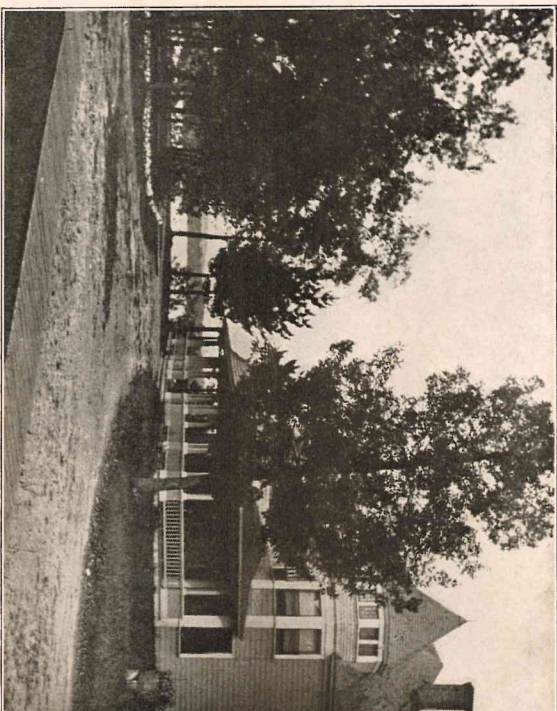
GRAND VIEW HOTEL "CHAIN O LA"



GRAND VIEW HOTEL "CHAIN O LAKES."

ANNOUNCEMENT FOR 1908

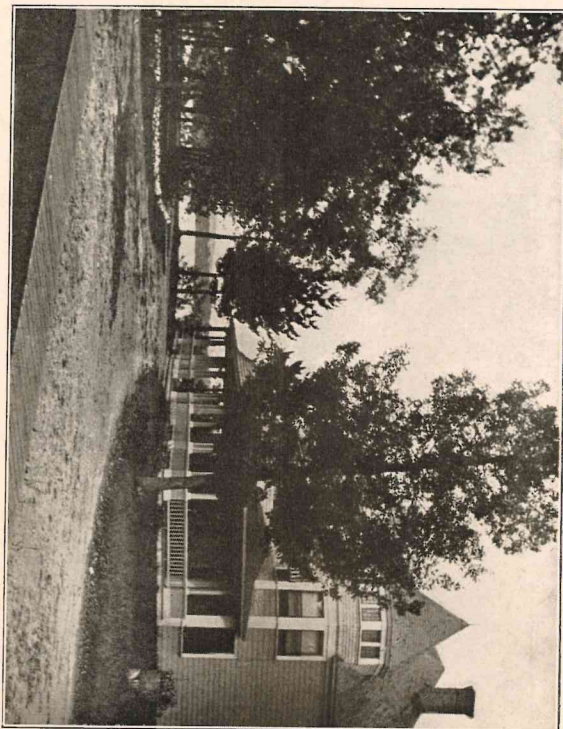
The Grand View Hotel and Cottages, the most beautiful and homelike summer resort in Wisconsin, will formally open for the fifteenth consecutive season June 27th and close September 10th, 1908. Patrons may expect and will receive first-class accommodations. The Grand View, The Annex and ten cottages have a combined capacity for 200 guests. The buildings are on high, dry ground, overlooking Rainbow Lake, one of the most beautiful of the sixteen small bodies of water that form the famous "Chain o' Lakes," and known as the "Killarneys of Wisconsin." The climate here is ideal, and the nights are usually cool. No such thing as malaria is known. There is plenty of forest, the finest bathing in the State, excellent bass and trout fishing in the lakes and nearby streams, good country roads, and the most charming and safe waters for boating that could be imagined. A large amusement hall, nearly fifty feet wide and over one hundred feet long, is at the disposal of guests for concerts, private theatricals, dancing and other diversions. The hotel buildings and all cottages are lighted by electricity, and are sanitary in every particular. Especial attention will be paid to the dining-room, and the tables furnished with the best the market affords. Fresh vegetables, cream, milk, berries, butter and eggs in abundance. Sheafel Spring Water, the purest in the world, free to guests. Plenty of row boats and canoes for hire at the Grand View Docks. Numerous steam and gasoline power boats ply upon the lakes, and are available at all hours of the day, or evening, at moderate charges.



GRAND VIEW ANNEX. "CHAIN O'LAKES."

ANNOUNCEMENT FOR 1908

ew Hotel and Cottages, the most beautiful and homelike summer resort normally open for the fifteenth consecutive season June 27th and close 3. Patrons may expect and will receive first-class accommodations. The annex and ten cottages have a combined capacity for 200 guests. The 4, dry ground, overlooking Rainbow Lake, one of the most beautiful of bodies of water that form the famous "Chain o' Lakes," and 5. The climate here is ideal, and the nights are 6. The finest 7. There is plenty of forest, the finest 8. and the most charming and safe waters for boating that could be 9. and the most charming and safe waters for boating that could be 10. amusement hall, nearly fifty feet wide and over one hundred feet 11. of guests for concerts, private theatricals, dancing and other diver- 12. lidings and all cottages are lighted by electricity, and are sanitary 13. Special attention will be paid to the dining-room, and the tables 14. est the market affords. Fresh vegetables, cream, milk, berries, butter 15. ice. Sheafiel Spring Water, the purest in the world, free to guests. 16. s and canoes for hire at the Grand View Docks. Numerous steam 17. boats ply upon the lakes, and are available at all hours of the day. 18. ate charges.



GRAND VIEW ANNEX, "CHAIN O' LAKES."

SHEALTIEL SPRINGS

The following analysis of the Shealtiel Spring Water will be of interest to those appreciating pure water. The springs are directly opposite the Grand View, a distance of about a mile, and a regular visit to them in a row boat, before breakfast, will soon bring about a healthy appetite to those who need it.

Milwaukee, Wis., May 1, 1904.

Dear Sirs:—Herewith you will find the result of the analysis of the sample of water from your springs. One gallon of water, United States standard measure, contains a total of 14.6482 grains of solid substance, consisting of the following:

Chloride of Sodium.....	0.1638
Sulphate of Soda.....	0.1930
Bicarbonate of Soda.....	0.7546
Bicarbonate of Lime.....	6.4350
Bicarbonate of Magnesia.....	6.3648
Bicarbonate of Protoxyde of Iron.....	0.0468
Alumina.....	0.0877
Silica.....	0.6025
Organic matter.....	0.0000

The water is free from organic matter, very clear and of excellent taste. It does not contain any sulphate of lime and is therefore well adapted to all medicinal purposes for which this class of water is recommended.

GUSTAVUS BODE, Analytical Chemist.



ROUND LAKE BY MOONLIGHT, "CHAIN O' LAKES."

SHEALTIEL SPRINGS

ing analysis of the Shealtiel Spring Water will be of interest to those water. The springs are directly opposite the Grand View, a distance and a regular visit to them in a row boat, before breakfast, will soon thy appetite to those who need it.

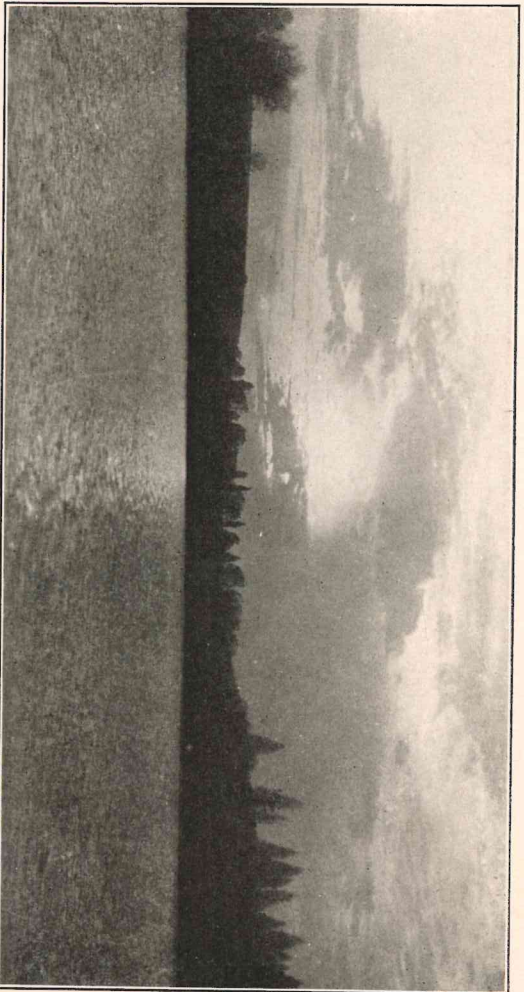
Milwaukee, Wis., May 1, 1904.

Herewith you will find the result of the analysis of the sample of water . One gallon of water, United States standard measure, contains a rains of solid substance, consisting of the following:

chloride of Sodium.....	0.1638
Alphate of Soda.....	0.1930
carbonate of Soda.....	0.7546
carbonate of Lime.....	6.4350
carbonate of Magnesia.....	6.3648
carbonate of Protoxyde of Iron.....	0.0468
limina	0.0877
lica	0.6025
rganic matter.....	0.0000

is free from organic matter, very clear and of excellent taste. It any sulphate of lime and is therefore well adapted to all medicinal this class of water is recommended.

GUSTAVUS BODE, Analytical Chemist.



ROUND LAKE BY MOONLIGHT, "CHAIN O' LAKES."

HOTEL RATES, AMERICAN PLAN

Rates at the Grand View Hotel during the season of 1908, for less than one week, will be \$3.00 per day for one person. For two persons occupying one room, \$2.50 per day each. Weekly rates from \$12.50 to \$17.50 per week for each person, depending on length of stay, number of occupants, and location of room. For children between the ages of three and twelve years, and maids and nurses, taking meals in ordinary, from \$6.50 to \$9.50 per week, each. Special low rates for children under three years of age, who will not be allowed to take meals in the main dining room, but for whom ample accommodations will be provided in the ordinary.



ENTRANCE TO YOUNGS LAKE, "CHAIN O' LAKES."

ENTRANCE TO YOUNGS LAKE, "CHAIN O' LAKES."

HOTEL RATES, AMERICAN PLAN

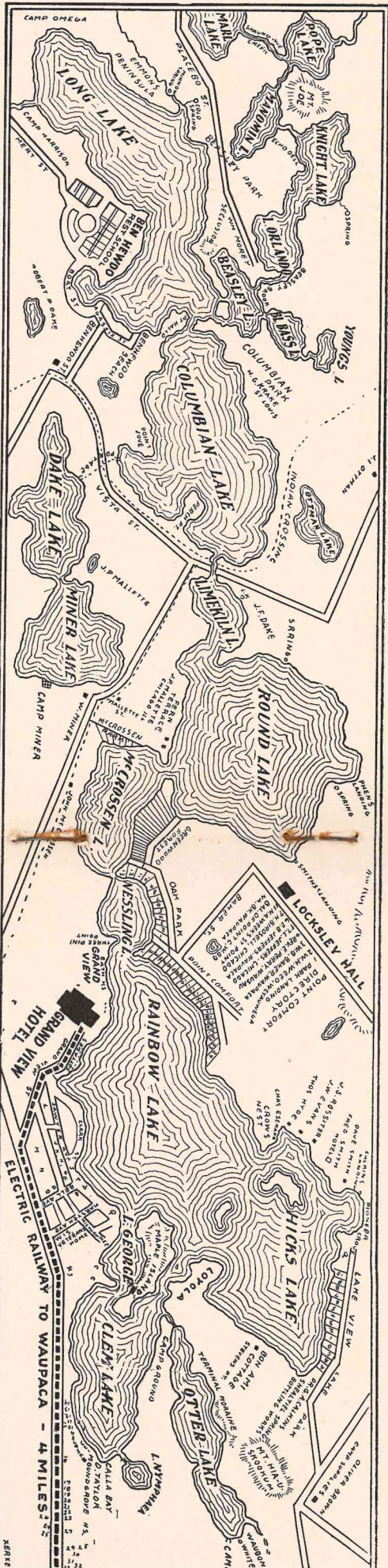
he Grand View Hotel during the season of 1908, for less than one week, r day for one person. For two persons occupying one room, \$2.50 per ly rates from \$12.50 to \$17.50 per week for each person, depending on number of occupants, and location of room. For children between the id twelve years, and maids and nurses, taking meals in ordinary, from r week, each. Special low rates for children under three years of age, allowed to take meals in the main dining room, but for whom ample will be provided in the ordinary.



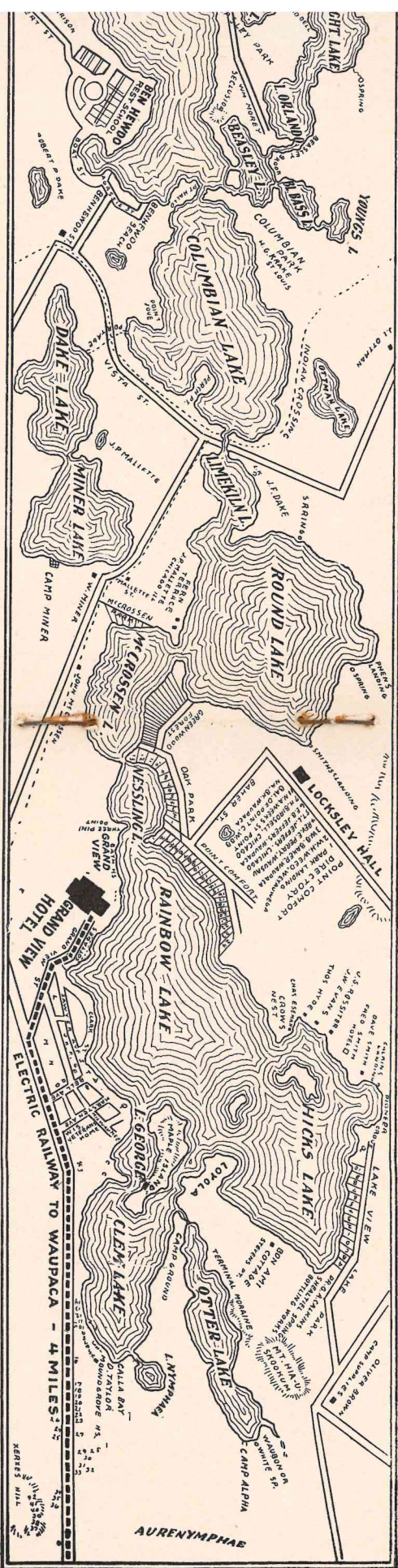
ENTRANCE TO YOUNGS LAKE, "CHAIN O' LAKES."

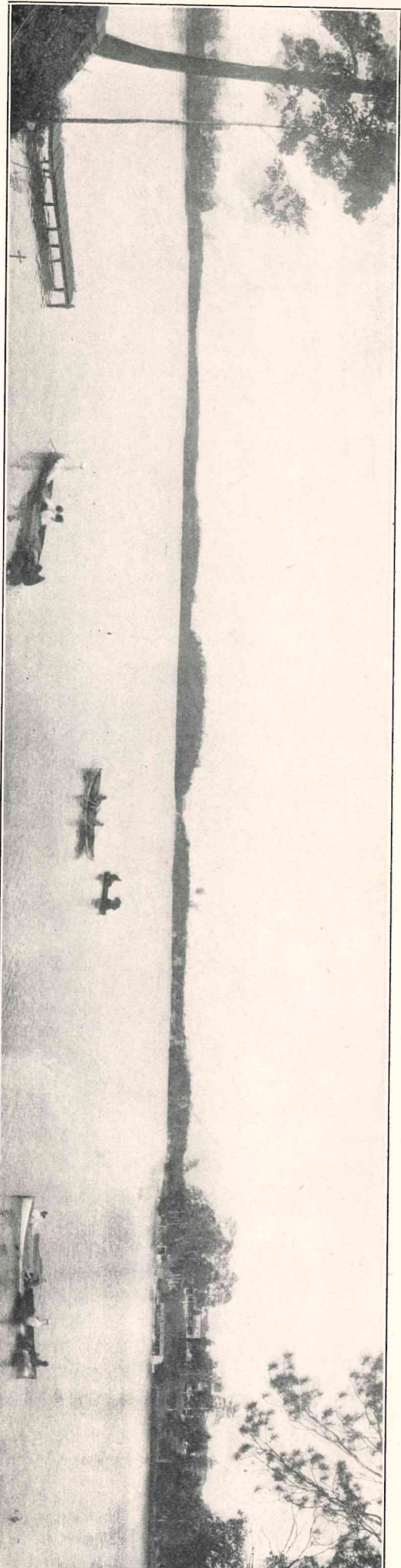
ENTRANCE TO YOUNGS LAKE
View from the Hotel

"CHAIN OF LAKES," WAUPACA, WIS.

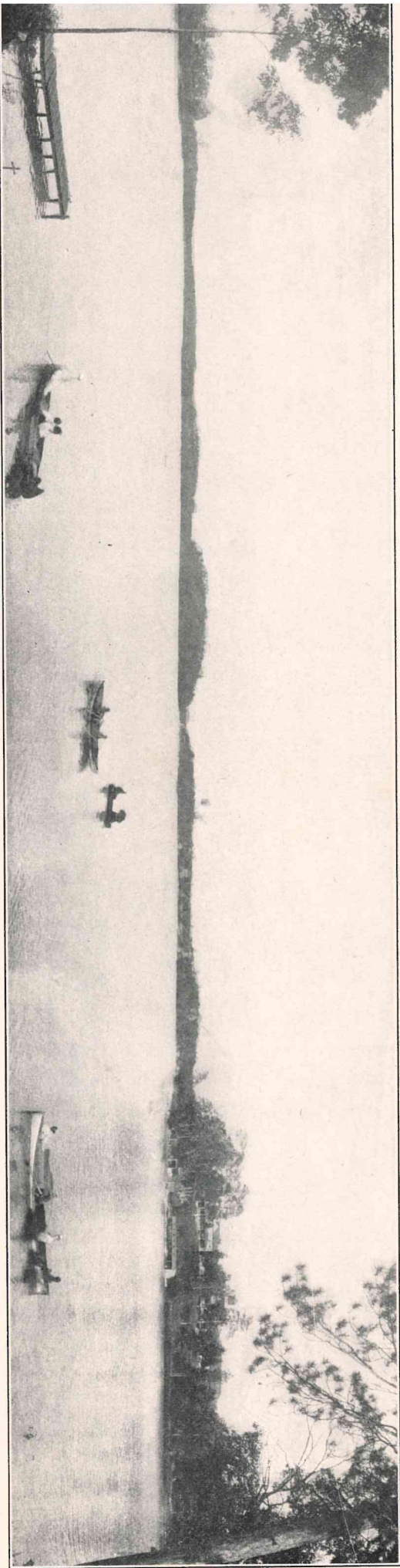


"CHAIN O' LAKES," WAUPACA, WIS.



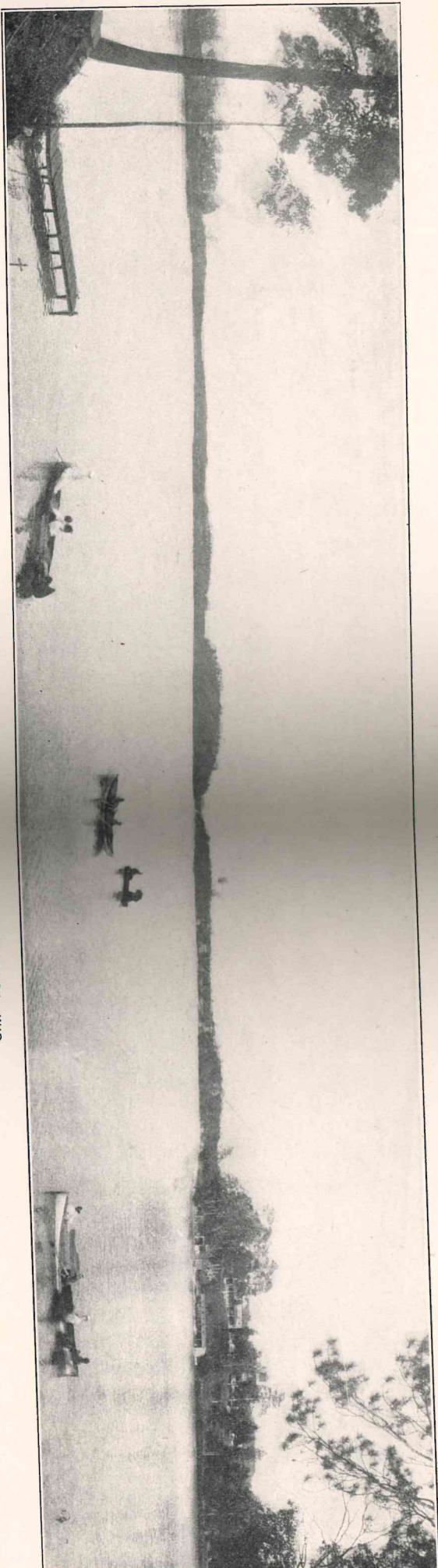


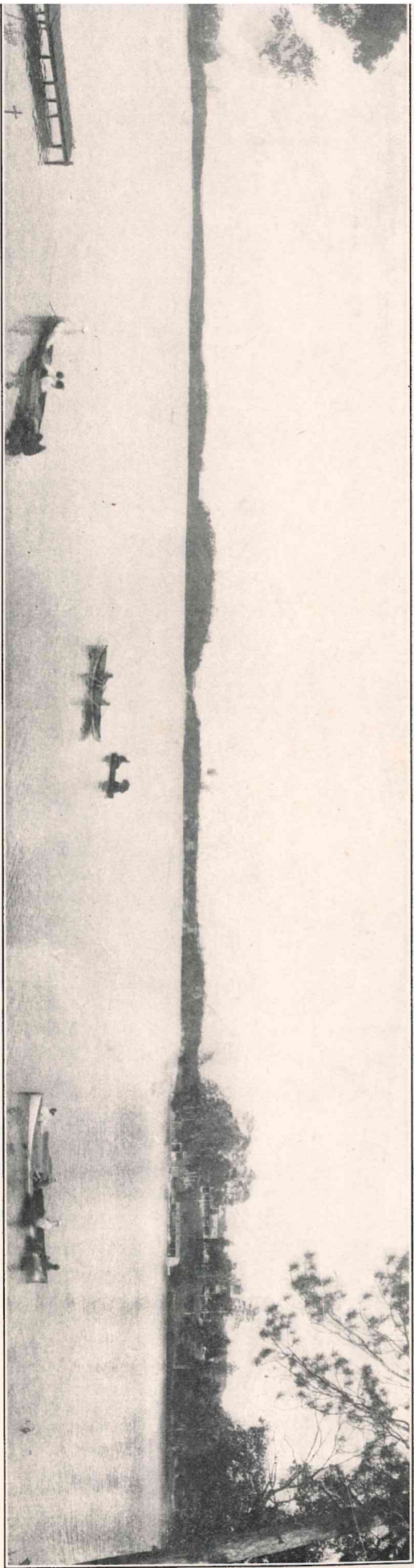
RAINBOW LAKE, ONE OF THE "CHAIN," WAUPACA, WIS.



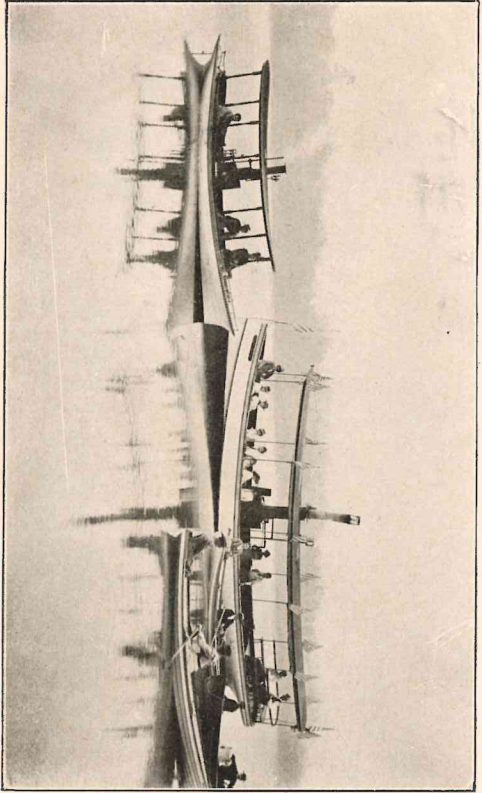
RAINBOW LAKE, ONE OF THE "CHAIN," WAUPACA, WIS.

RAINBOW LAKE, ONE OF THE "CHAIN," WAUPACA, WIS.

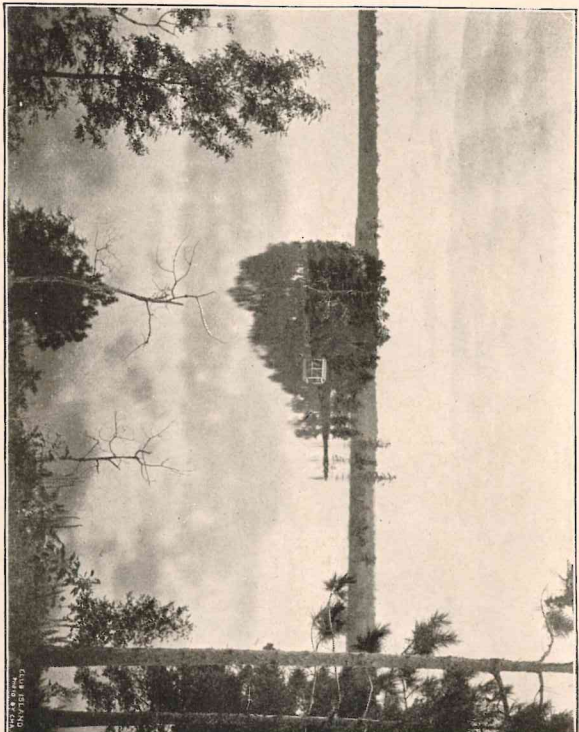




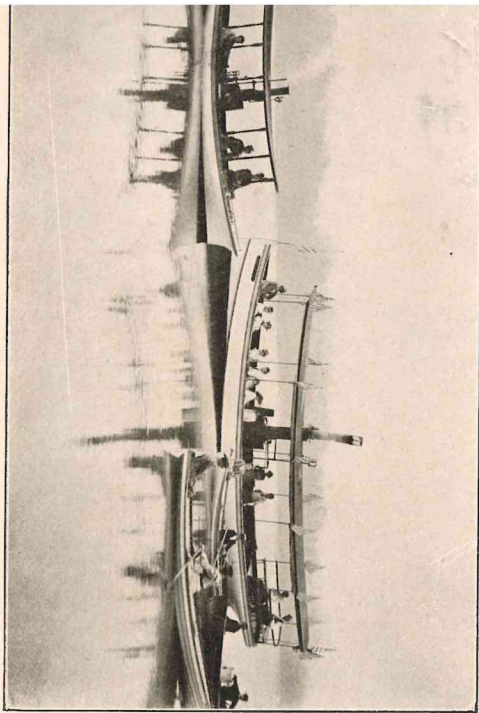
RAINBOW LAKE, ONE OF THE "CHAIN," WAUPACA, WIS.



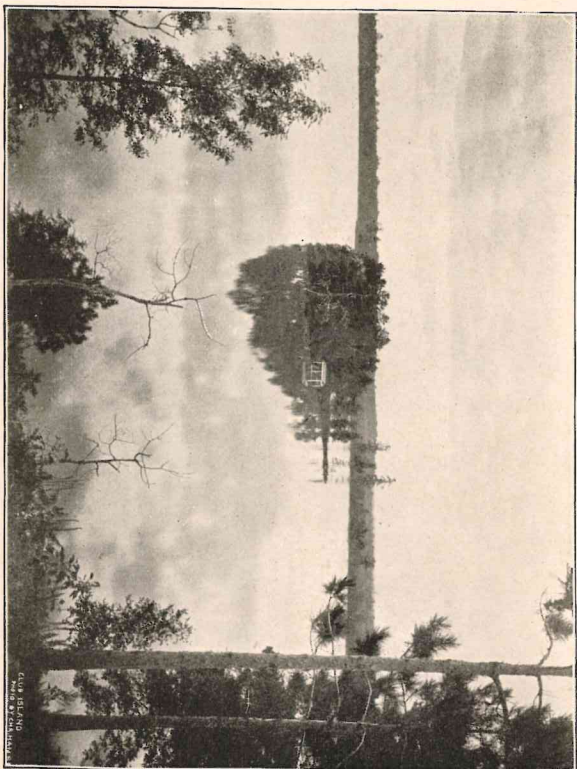
PUBLIC PLEASURE BOATS, "CHAIN O' LAKES."



COA ISLAND
MAY 1914



PUBLIC PLEASURE BOATS, "CHAIN O' LAKES."



OUR BEARS
AND THE HOUSE

TRANSPORTATION INFORMATION

The Grand View Hotel and Cottages are located five miles from Waupaca, at the terminus of an up-to-date electric railroad which provides half hour service to and from the railway station in the city. Waupaca is on the Wisconsin Central Railway, 220 miles north of Chicago, and is reached from that city by frequent and comfortable trains on that line. Special rate tickets to Waupaca and return, good from June 1st to October 31st, may be obtained at all leading railway and ticket offices in the south. Schedule of trains, parlor and dining car service, and all other train information cheerfully furnished on request to F. B. Martin, City Passenger Agent, 204 Clark Street, Chicago. Long distance telephone in hotel office.

CARRIAGES

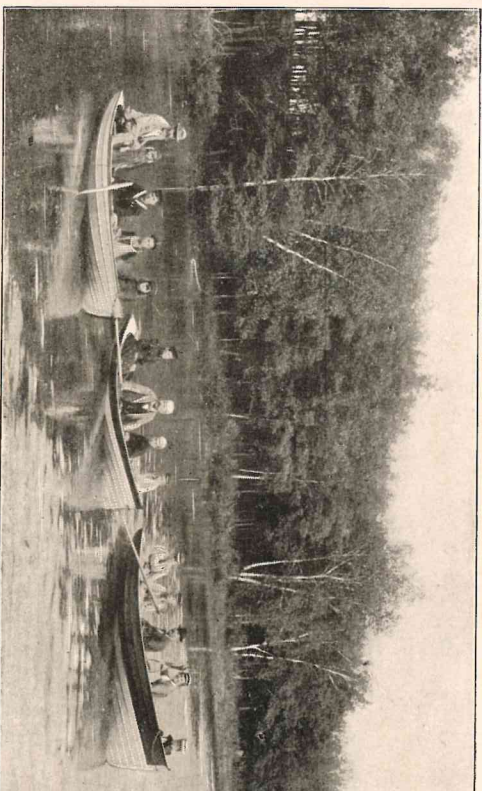
Upon previous notice, carriage will meet guests arriving at Waupaca on night trains.

LIVERY

A livery with desirable turnouts is at the service of Grand View guests. Safe horses, comfortable vehicles, and reasonable charges assured.

AUTOMOBILE GARAGE

An automobile garage has recently been established here, where machines can be rented, repaired and housed at reasonable rates.



A PICNIC PARTY, "CHAIN O' LAKES.."

TRANSPORTATION INFORMATION

Grand View Hotel and Cottages are located five miles from Waupaca, at the up-to-date electric railroad which provides half hour service to and from Waupaca in the city. Waupaca is on the Wisconsin Central Railway, 220 miles from Waupaca, and is reached from that city by frequent and comfortable trains on that line. Tickets to Waupaca and return, good from June 1st to October 31st, may be purchased from the leading railway and ticket offices in the south. Schedule of trains, parlor service, and all other train information cheerfully furnished on request to F. Passenger Agent, 204 Clark Street, Chicago. Long distance telephone

CARRIAGES

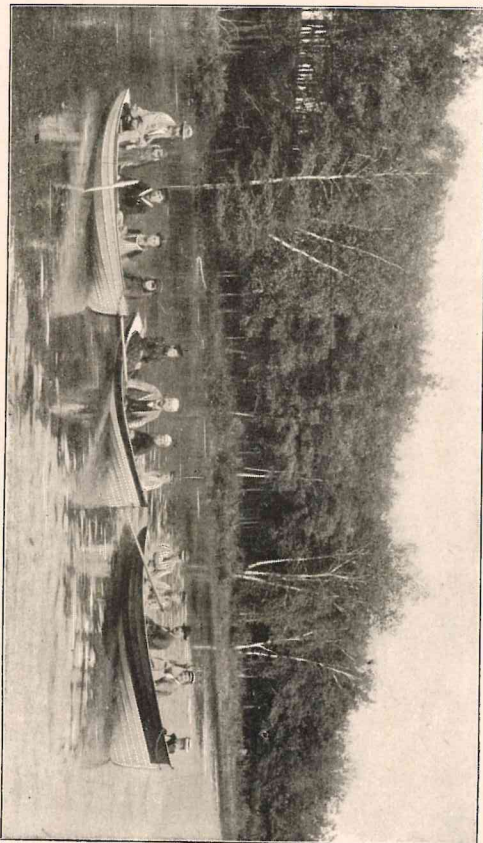
Notice, carriage will meet guests arriving at Waupaca on night trains.

LIVERY

With desirable turnouts is at the service of Grand View guests. Safe and reasonable charges assured.

AUTOMOBILE GARAGE

Automobile garage has recently been established here, where machines can be stored and housed at reasonable rates.



A PICNIC PARTY, "CHAIN O' LAKES."

AMUSEMENTS

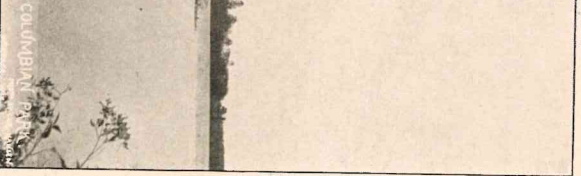
A summer's outing would be incomplete without its full quota of amusements. Grand View has provided an enclosed base-ball park, with a covered grandstand will easily seat three hundred people. Semi-professional games are often played as well as many interesting ones between our guests in friendly strife with other hotels around the lakes. A tennis court and croquet grounds are available for those who desire to use them. Two or three dancing parties each week in the Grand View hall are given for our guests, and without expense to them. Card parties in the Grand View, or some of the cottages, are of almost nightly occurrence. Merganser roasts, green-corn roasts and fish fries, interest the young as well as the old and aged. Water carnivals, which are taken part in by scores of power boats are common, and the illumination and manoeuvres of the various craft as viewed from the hotel grounds, present a most attractive appearance. Straw rides for the boys and hay racks, each loaded with half a ton of straw and a ton or more of children, are arranged as often as required, and it is not unusual to see a couple of children on the Grand View for an early evening's jollification. Band concerts twice a week at the Wisconsin Veterans' Home, a State institution, ten minutes walk from the hotel, are a pleasant diversion for all. Here are gathered nearly a thousand veterans of the World War, now passing the evening of their lives as the wards of the great and good of Wisconsin.



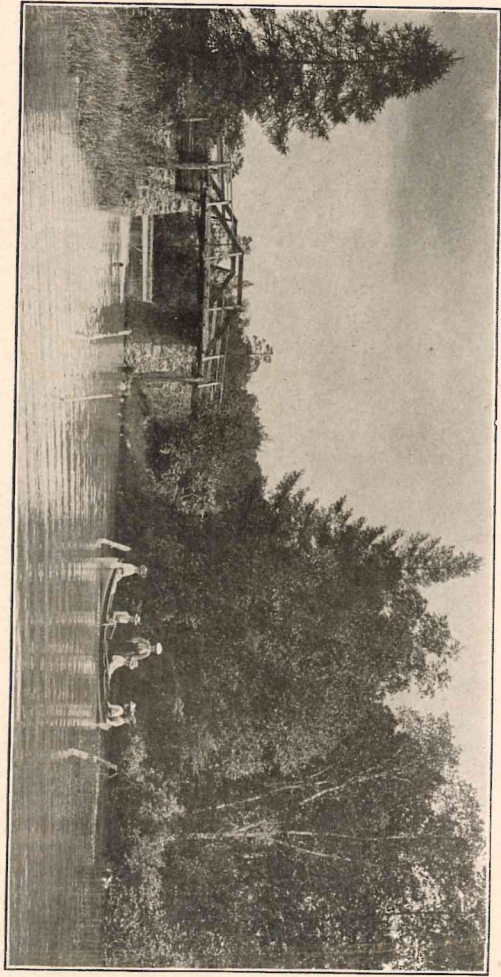
COLUMBIAN PARK, "CHAIN O' LAKES."

AMUSEMENTS

A summer's outing would be incomplete without its full quota of amusements. The Grand View has provided an enclosed base-ball park, with a covered grand stand that will easily seat three hundred people. Semi-professional games are often played here, as well as many interesting ones between our guests in friendly strife with the guests of other hotels around the lakes. A tennis court and croquet grounds are available for those who desire to use them. Two or three dancing parties each week in the amusement hall are given for our guests, and without expense to them. Card parties in the Annex, Grand View, or some of the cottages, are of almost nightly occurrence. Marshmallow roasts, green-corn roasts and fish frys, interest the young as well as the old and middle-aged. Water carnivals, which are taken part in by scores of power boats are of frequent happening, and the illumination and manoeuvres of the various craft as viewed from the hotel grounds, present a most attractive appearance. Straw rides for the boys and girls are arranged as often as required, and it is not unusual to see a couple of farmers' hay racks, each loaded with half a ton of straw and a ton or more of children leaving the Grand View for an early evening's jollification. Band concerts twice a week at the Wisconsin Veterans' Home, a State institution, ten minutes walk from the hotel affords a pleasant diversion for all. Here are gathered nearly a thousand veterans of the Civil War, now passing the evening of their lives as the wards of the great and rich State of Wisconsin.



COLUMBIAN PARK, "CHAIN O' LAKES."



INDIAN CROSSING, "CHAIN O' LAKES."

